

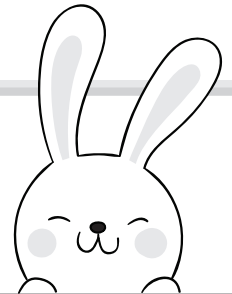
ESCOLA: \_\_\_\_\_

NOME: \_\_\_\_\_

PROFESSOR: \_\_\_\_\_ DATA: \_\_\_\_/\_\_\_\_/\_\_\_\_



# PÁSCOA



1 - CUBRA AS LETRAS DO ALFABETO.

Tracing activity for the alphabet. The letters A through Z are shown in dashed lines for tracing. The letters are arranged in five rows:

- Row 1: A, B, C, D, E, F
- Row 2: G, H, I, J, K, L
- Row 3: M, N, O, P, Q, R, S
- Row 4: T, U, V, W
- Row 5: X, Y, Z

Decorative Easter-themed illustrations include:

- Two decorated Easter eggs (one with zig-zag patterns, one with dots) flanking the first row.
- Two chickens flanking the second row.
- Two decorated Easter eggs (one with horizontal stripes, one with vertical stripes) flanking the third row.
- Two rabbits flanking the fifth row.
- A basket of decorated Easter eggs at the bottom center.
- Small decorative elements like grass tufts and vertical lines scattered throughout the grid.